

RSM 2000



Remote Station Monitor

Description

The **RSM 2000 Remote Station Monitor** is designed specifically for use in monitoring pump lift stations and other pumping applications. The system consists of the **RSM 2000** hardware interface and customized data access through a **MeshVista™** data portal. The data portal provides access to status of the monitored equipment, administrative services, report generation, and alarm notifications. The **RSM 2000** unit uses an integral cell-based communications gateway to forward alarms and status data to the data portal.

Communications

All **RSM 2000** remote devices use the GSM cellular networking technology to provide **two-way communications** between the data portal and the remote equipment. The **RSM 2000** device contains a **built-in** cellular gateway module and a user-mounted antenna. The gateway also contains a **removable SIM card** that contains the configuration and network personality information needed to connect to the local cell network. The SIM card is associated with ongoing data services and is a necessary component to guarantee connectivity to the local cell service provider. The **RSM 2000** unit is shipped with a **pre-configured SIM card** that must be inserted and activated prior to installation and start-up.

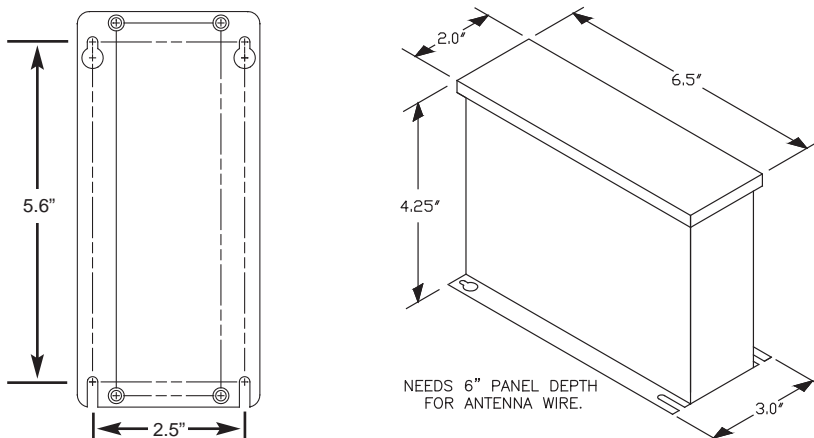
Data Interface

The **RSM 2000** uses standards-based methods of presenting data and providing alarm condition notifications. Alarms are forwarded to users with SMS (text) messaging services and/or standard email. The notifications contain information on the device and the alarm condition so proper response activities can be initiated immediately. Email notifications are sent out according to a user-defined escalation scheme to determine who gets the messages. The **RSM 2000** also comprises a dedicated webpage accessible only by users with secure login credentials. The website provides the user tools to monitor and manage remote assets.

RSM 2000

The **RSM 2000** requires a **12-24 VDC** power source and can be mounted directly in a control panel. Standard models are shipped with a high-gain antenna and a cell service SIM card. Contact Control Works Sales Engineers for further details.

Dimensions & Mounting *Use #8 screws*



Patent Pending

Features

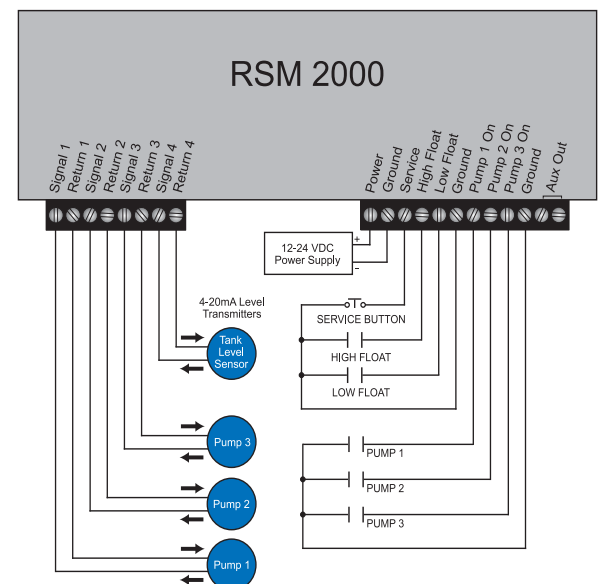
- Power Fail Detection
- Service Button Interface
- High Level Alarm
- Low Level Alarm
- (3) Pump Run Time/Cycle Count Inputs
- (3) 4-20mA Pump Current Input
- 4-20mA Continuous Level Sensor Input
- Digital Relay Output
- Status and Input Indicator LEDs

Power	12VDC @ 330mA 24VDC @ 170mA
Storage Temperature	-40°F to 156°F (-40°C to 70°C)
Operating Temperature	-21°F to 156°F (-30°C to 70°C)
Humidity	0-100% non-condensing
ESD Immunity	EN61000-4-2
Radiated Immunity	EN61000-4-3
EFT/Burst Immunity	EN61000-4-4
Conducted Immunity	EN61000-4-6
Radiated Emissions	FCC Part 15 - Class A EN61326-1:2006 Class A EN55011:2007+A2:2007 (CISPR 11)



ID # R17GE864

Wiring Diagram



RSM 2000



Remote Station Monitor

Data Services

The **RSM 2000** includes access to a **secure, custom website** to allow monitoring and administration of the **RSM 2000** device and its data. The data is transported over standard GSM Networks (cell networks). As such, the device includes a SIM card and cell network service fees apply.

An **Account Service Activation Form** must be filled out by the end user which establishes an account for service fee billing and provides details of the device application for webpage set-up.

Activation of the remote data services cannot be done until the form is received. Within 48 hours of receiving the form, a webpage will be set up and an email notification shall be sent to the user's address as listed on the form. This email message contains a username and password to allow access to the website. Upon logging on to the site for the first time, the user will be asked to accept the end-user license agreement.

Warranty

Control Works' sole and exclusive warranty regarding the Notification Services is such that services provided directly by Control Works shall perform in conformity with standard industry practices. Control Works shall provide a two-year limited warranty on all equipment provided, along with a two-year service contract.

Ordering Information

For more information on the **RSM 2000 Remote Station Monitor**, please contact Control Works:

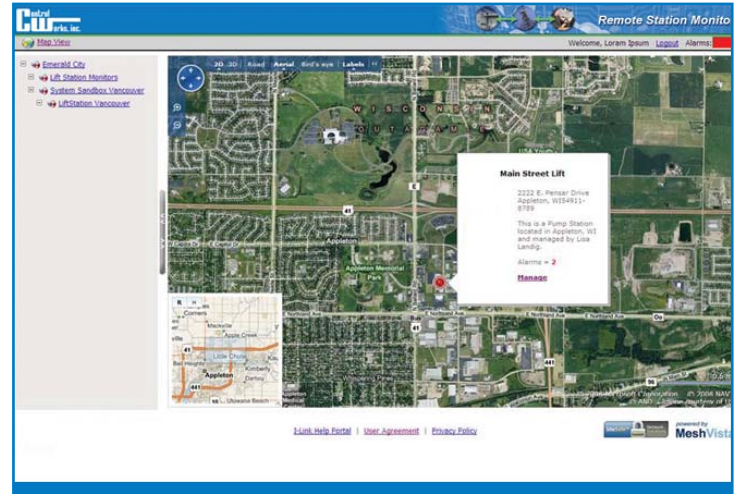
Phone **513-831-9959**

Fax **513-831-3549**

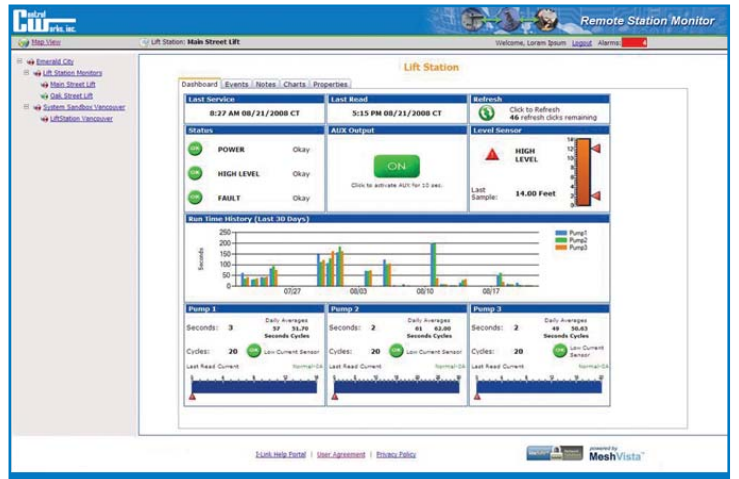


1179 US Highway 50, Milford, Ohio 45150 USA
Phone: 513-831-9959 ● Fax: 513-831-3549
www.controlworksinc.com

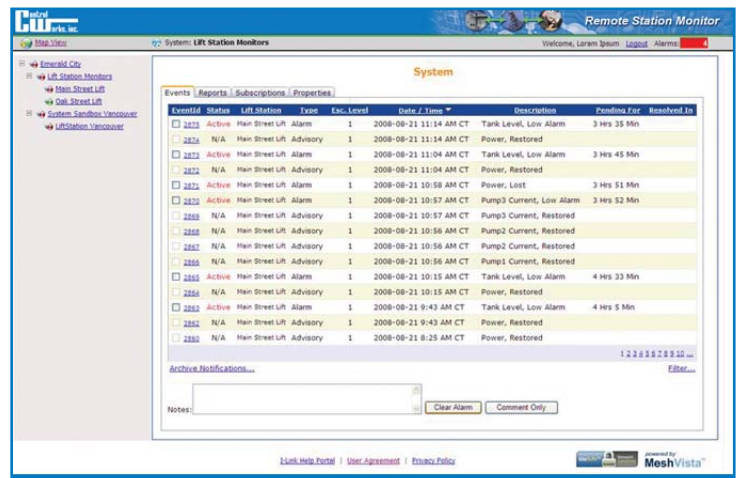
©Control Works Inc. 03/09



Map View Screen



Dashboard Screen



Alarm Screen