



### RSM 2000 Web Demo/Screens Login Information

The RSM 2000 Remote Station Monitor offers two-way communication which allows you to monitor system performance and program system parameters from your PC. Reporting capabilities provide instant results - the system notifies you of a system event as it occurs, detailing complete event specifications. Normal operating conditions are reported daily.

Control Works Inc. has set up a sample website for you to view a live demo of the RSM 2000. To access the demo site, please go to the following web address and enter the user name and password:

**Log on to <https://www.meshvista.net/controlworks>**

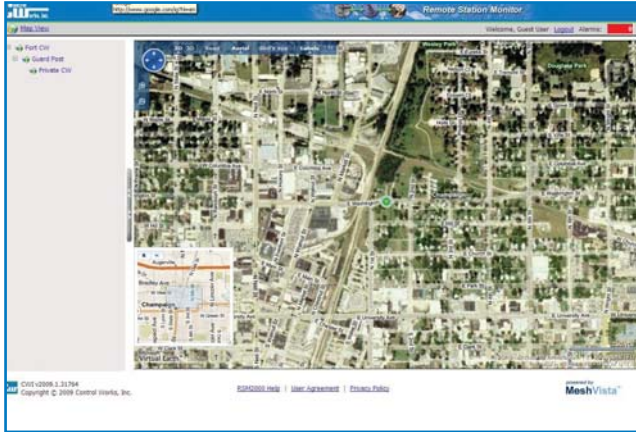
Login to CWI Remote Station Monitor	
User Name:	<input type="text" value="Guest"/>
Password:	<input type="text" value="Private CW1!"/>

**NOTE:** The password is case sensitive and requires a special character at the end, so be sure to enter the ! after the 1.

*Web screen details are shown on reverse side...*



### RSM 2000 Web Demo/Screen Detail



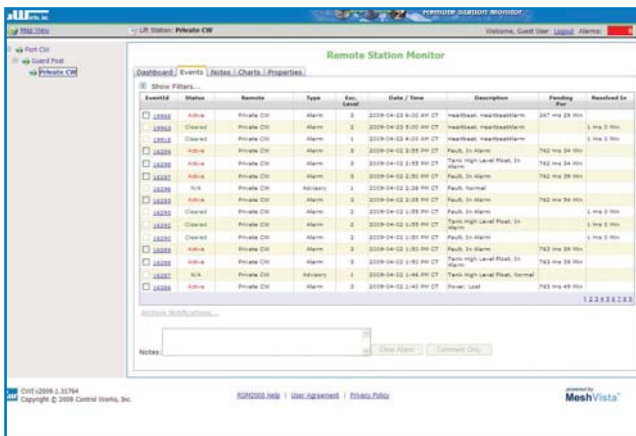
#### RSM 2000 Map View:

The map view allows the user to display different views of assets/wastewater systems including road, aerial, birdseye, hybrid, 2D and 3D views.



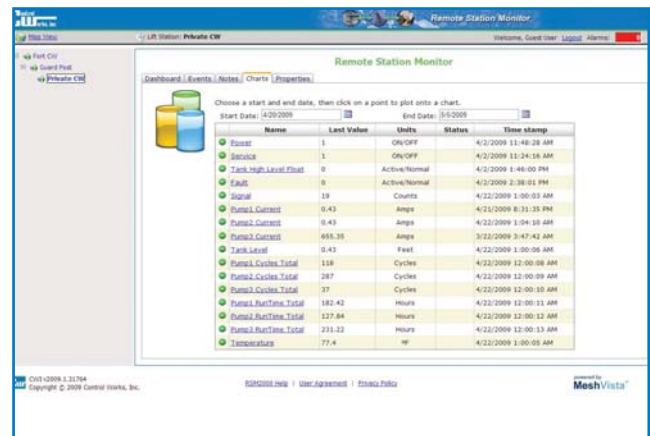
#### RSM 2000 Dashboard:

The dashboard view provides a complete overview of critical system components; alarm messages display current status of components flagged for alarm condition.



#### RSM 2000 Alarm Screen:

The alarm screen lists all events flagged for notification; can be either a warning or an alarm; cleared from this page by clicking on an event.



#### RSM 2000 Chart Screen:

View a graph or table of any collected data points over desired time period.